



W DUBAI

MINA SEYAHİ

GUESTROOMS

Set across 31 floors, check-in and stay in style in one of our 318 rooms, including different family rooms, 26 suites and the EWOW suite on the 30th floor. Choose from our Fantastic rooms & suites located on the 3rd to 9th floors, Marvelous rooms & suites from the 10th to 19th floors, or Spectacular rooms & suites from the 20th to 30th floors. Each design-led room features walk-in wardrobe areas, beautifully appointed bathrooms, and a W Mixbar for you to create your perfect beverage, all while enjoying breathtaking views of the Arabian Gulf.

E-WOW SUITE

Located on the 30th floor experience next-level luxe with a 225 square meter two-bedroom suite with a connecting room, and unrivaled panoramic views overlooking Ain Dubai and Palm Jumeirah Island.

WHATEVER/WHENEVER®

No task too small, no ask too big. Whether you're craving a cold drink or devising your dream excursion,

we're here to make it happen with our Whatever/Whenever® service. Whatever you want. Whenever you want it.

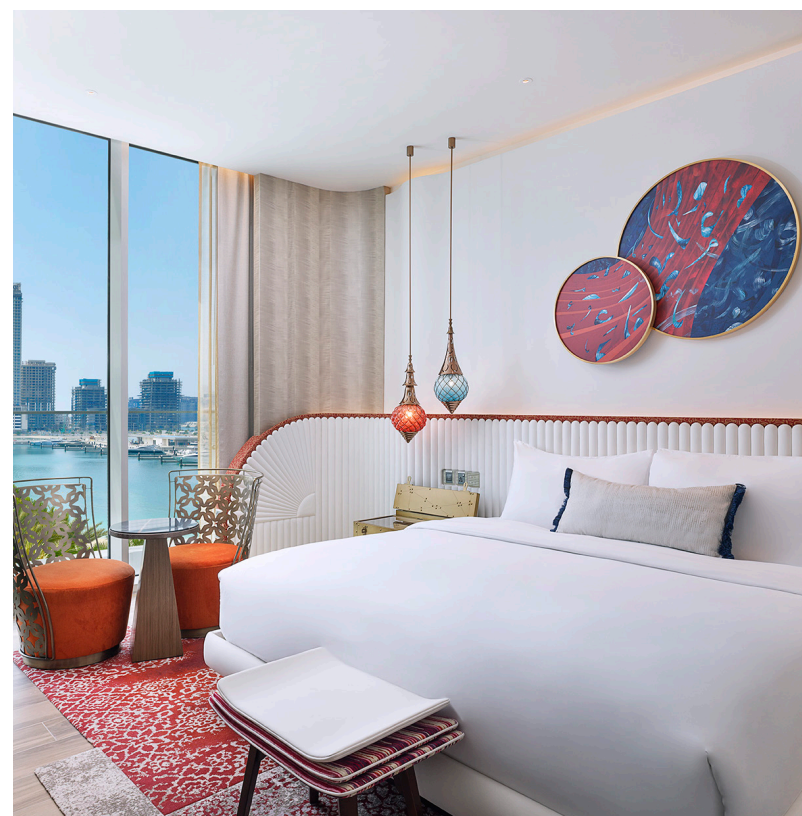
BAR-B SPA

BAR-B, a unisex spa for the guest who likes to show up, show off and show stop! Cocktail culture is at the heart of BAR-B, a unique spa experience where socialising and being pampered go hand in hand. From massages to mani-pedi's, hair styling to glam booths, BAR-B offers a tantalising spa experience whether you're looking for chilled out vibes or amped up fun.

COCKTAILS/CUISINE

FARRAGO BAR & LOUNGE

Farrago Bar & Lounge is a place to see and be seen. W Dubai - Mina Seyahi's lobby lounge is an indoor and outdoor destination where guests and locals can mix and mingle. Enjoy DJ sets while sipping on imaginative beverages and sample signature dishes, inspired by the Middle East.





GINGER MOON

Ginger Moon offers a ‘no beach, beach club’ experience. Ginger Moon is the spot to enjoy chilled vibes with family and friends from day to night. Sit poolside soaking in the sun before heading into Ginger Moon’s boho-inspired restaurant to sample our famed New Californian cuisine for breakfast, lunch or dinner.

LEOPARD BAR

A social hub for vanguards, the Leopard Bar is a hidden gem of jumbled enjoyment. An intimate lounge bar for those with a delectable palate and a thirst for sophisticated nightlife. Offering Arabesque small plates, and serving speciality Lebanese beverages. W’s Leopard Bar is a differentiated indoor-outdoor destination.

ATTIKO

is a sleek rooftop, high-energy lounge that will be recognized as the city’s newest happening destination. An upscale venue boasting the most envied views of the city, ATTIKO is a breathtaking location for sundowners to late-night gatherings where guests can enjoy tasty

bites and drinks in a vibrant atmosphere, with live DJs and deep, soulful, energetic music. ATTIKO will present an imaginative cuisine featuring a curated selection of modern and classic Pan-Asian dishes and an extensive menu of international hops, grapes, and exciting handcrafted cocktails. Age restriction 21+

STUDIOS

Host your stylish and intimate soiree in our Studio. When work isn’t working, break up the meeting with our eclectic and stimulating coffee breaks. With space for up to 150 guests, and a pristine private beach that can be transformed to the perfect venue or tailored for team activities, meetings can be held in any of our four studios, with the help of our experienced team of event planners to bring your vision to life.

THE WORLD AWAITS

Marriott Bonvoy™ is more than a loyalty program. Join now to connect with the people, passions and places you love. More than 7,000 hotels. Endless experiences. Rewards Reimagined. It all starts at marriottbonvoy.com.



W Dubai - Mina Seyahi
King Salman Bin Abdulaziz
Al Saud Street
PO Box 213084
+971 4 350 9999
w.dxbmw.reservations@whotels.com
wdubaiminaseyahi.com